

CAKE Osa (Plus and Flex Models) – Inspecting and Reseating the Motor Sensor

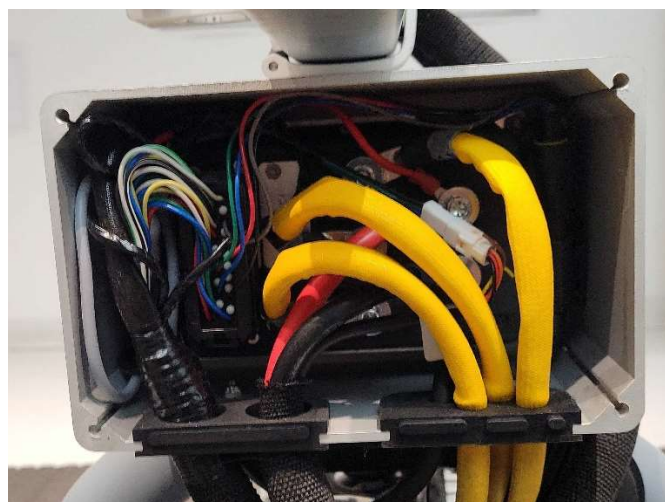
Tools required:

- Torx T25 bit/driver

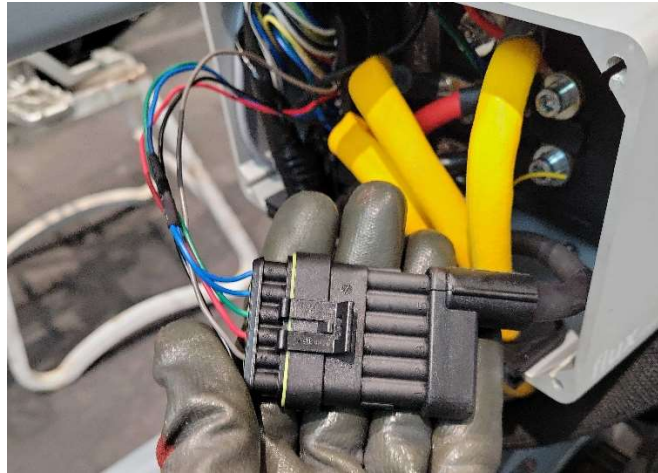
Step 1: Remove the battery for 10 minutes before proceeding to step 2.



Step 2: Using a Torx T25 bit/driver, remove the 4 securing bolts on the front of the controller box lid. With the lid removed, we will have visibility and access into the controller box. We want to make sure the inside of the controller box is free of any moisture and debris.



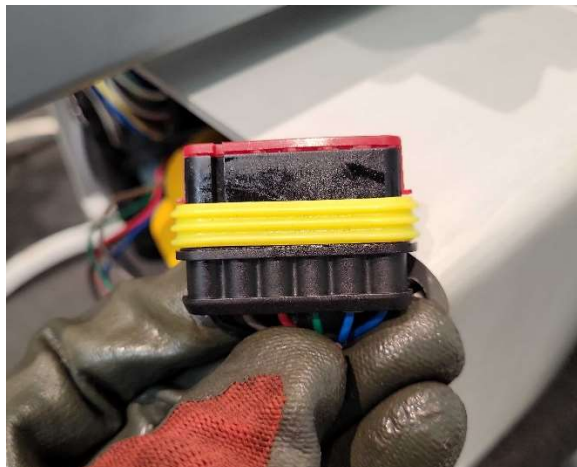
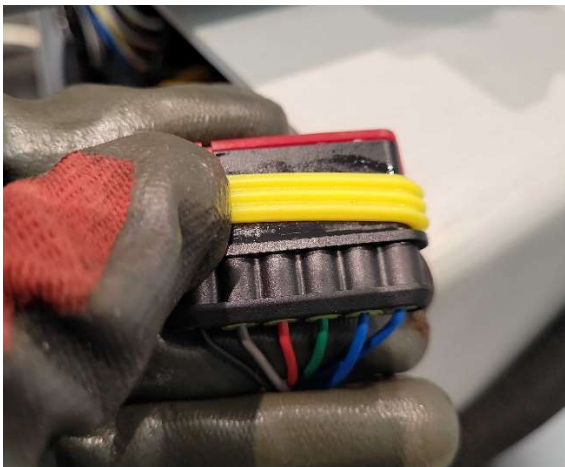
Step 3: Follow the black cable running from the motor into the controller box to locate and identify the motor sensor connection.



Step 4: Disengage the securing clip of the connector and unplug it. Inspect the pins and associated terminals on the connection. Make sure that nothing looks bent or damaged (very unlikely).



Step 5: Then, pay very careful attention of any moisture in the connection as well, particularly beneath/around the yellow rubber seal.



Step 6: If any moisture is observed, we will want to let this connection dry out thoroughly before plugging it back in. Tip: Using compressed air can help get the connector dry faster.

Step 7: Plug the connector back together, make sure you hear the securing clip click into place. Reverse the steps above to re-assemble the bike.

Complete!

Please do not hesitate to reach out with any questions or concerns before/during/after the process.

Thank you!

Cake Service Team