

## CAKE Osa – Replacing the Cake Connect Module

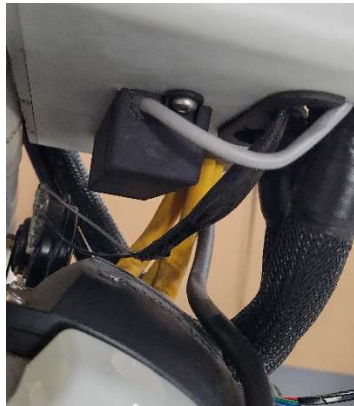
Tools Required:

Torx T25 bit/driver

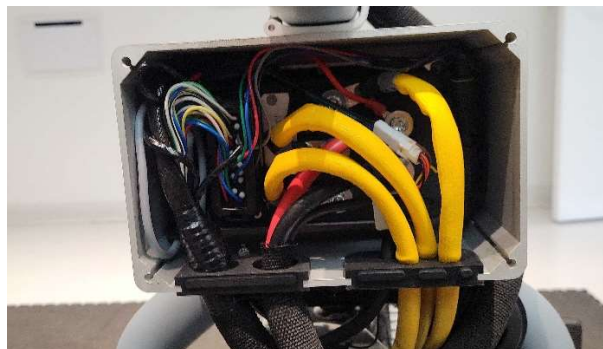
Torx T20 bit/driver

7mm Wrench

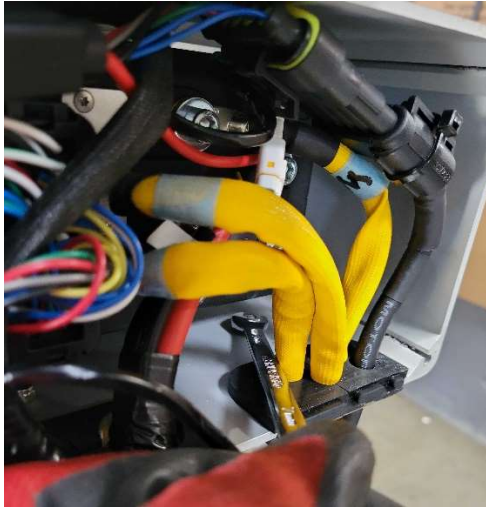
Step 1: Remove the battery from the bike completely for 10-15 minutes. For reference, the module is the 1in X 4in black unit beneath the controller box.



Step 2: Using a Torx T25 bit/driver, remove the 4 securing bolts of the controller box.



Step 3: Using the Torx T20 and a 7mm wrench, remove the 2 securing bolts for the module.



Step 4: Unplug the connection of the module the bikes wiring harness.



Step 5: Reverse the steps above for the installation process.

TIP: Take note of how the cable is routed through the rubber grommet where it exits the controller box. Make sure that the rubber grommets are seated all the way when re-installing the controller box lid.

Please do not hesitate to reach out with questions or concerns at any point before/during/after the process!

Thank you,  
Cake Service Team