

## Makka – Replacing the Connectivity Module

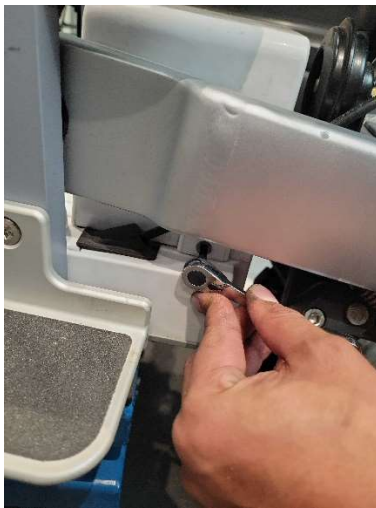
Tools Required:

- Torx T25 bit/driver
- Torx T20 bit/driver

Step 1: Unplug and remove the battery.



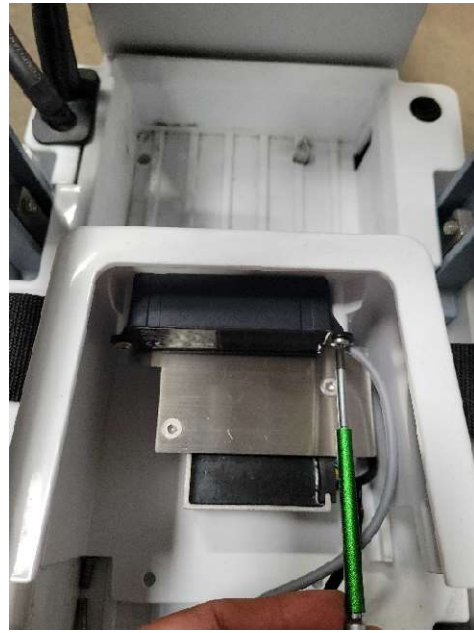
Step 2: Using a T25, remove the 4 securing bolts for the controller cover. A small note - The bolt on the right side of the cover can be tricky to access, as it is behind the main power cable to the rear wheel (photo below of its location).



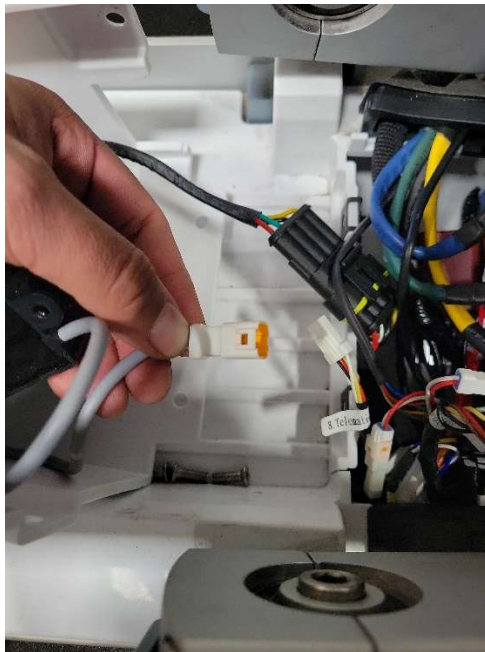
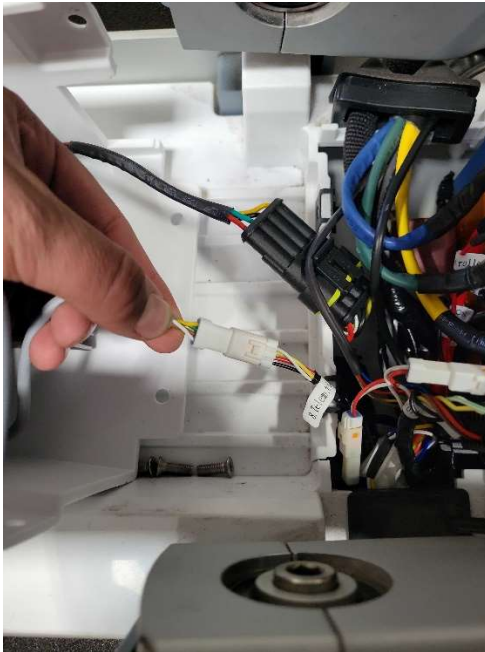
Step 3: Remove the controller cover.



Step 4: Using a Torx T20 bit/driver, remove the 2 securing screws for the connectivity module. The connectivity module is the 1in X 4in black box that is mounted to the underside on the controller cover.



Step 5: Unplug the connectivity module.



Step 6: Reverse the steps above for the installation of the new connectivity module.

Complete!