

## Installing a footpeg

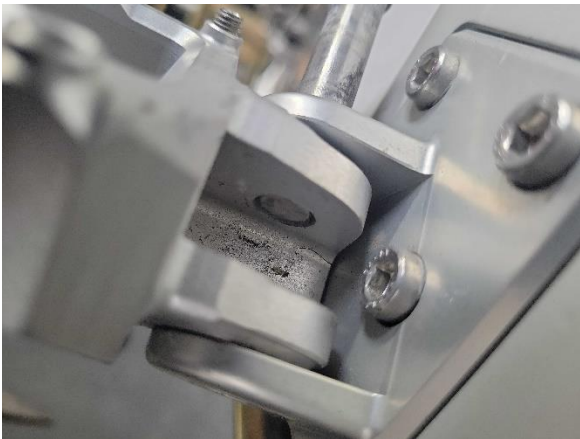
Tools required:

- Rubber Mallet
- Needle Nose Pliers
- 5mm Allen Wrench

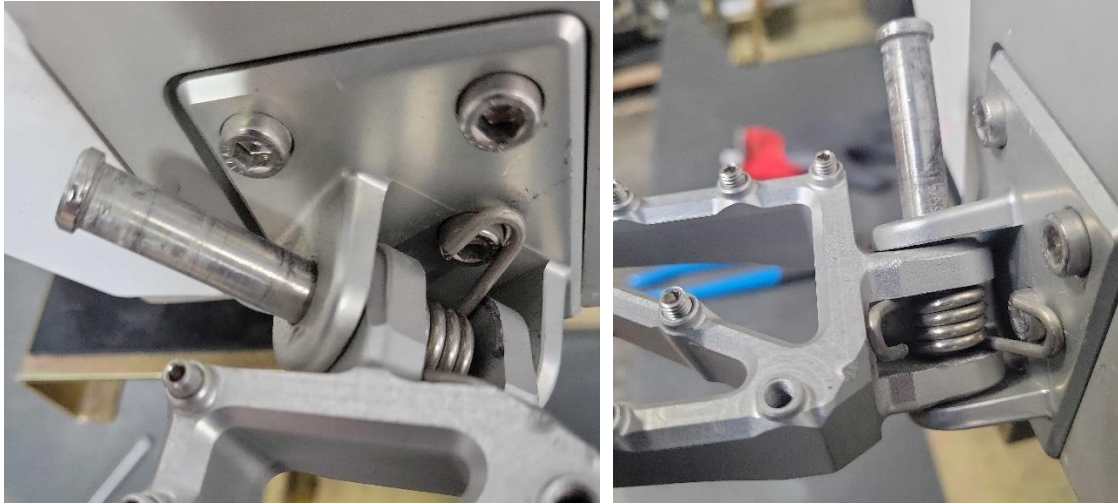
Step 1: Get the footplate bracket installed. This is the piece that the footpeg mounts too. For a Kalk, it is secured with three X 5mm bolts.



Step 2: Lightly get the footpeg into place. Insert the securing bolt partially, so it holds the footpeg in place, but does not interfere with the insertion of the spring.



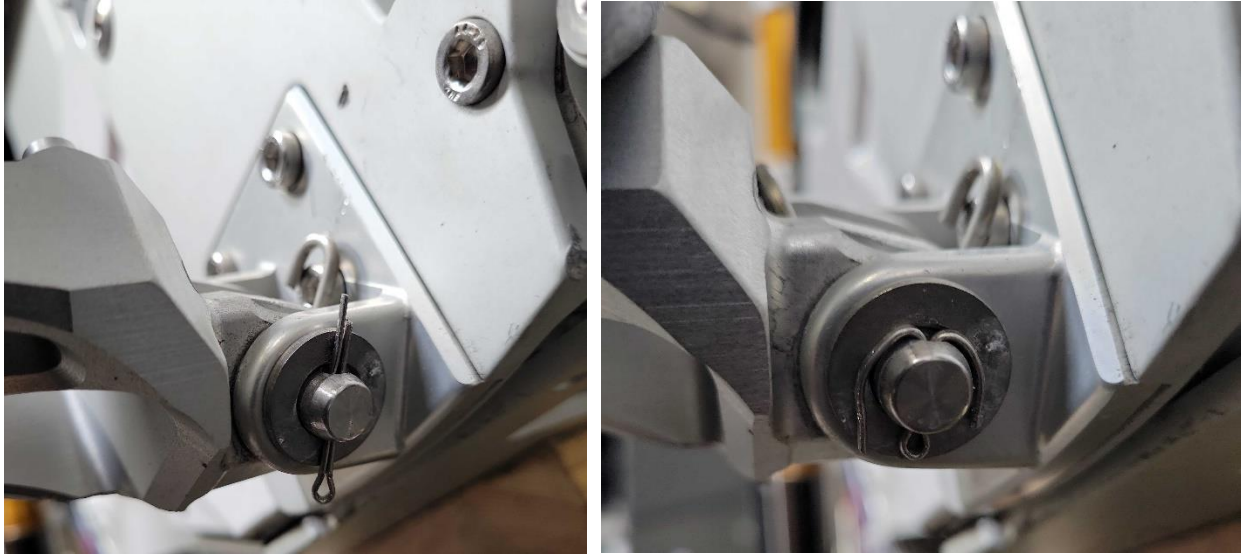
Step 3: Firmly insert the spring into the footpeg. The securing bolt should not interfere when pushing the spring into place, and the spring should remain in place after it is inserted.



Step 4: With the spring in place, begin to tap the securing bolt all the way through the spring and footpeg with a rubber mallet. You may have to adjust the resting position of the spring to ensure that it lines up with the bolt prior to tapping it through with the mallet.



Step 5: With the securing bolt in place, install the washer and cotter pin. Bend the ends of the cotter pin to ensure the securing bolt will not come out during normal use.



Complete!